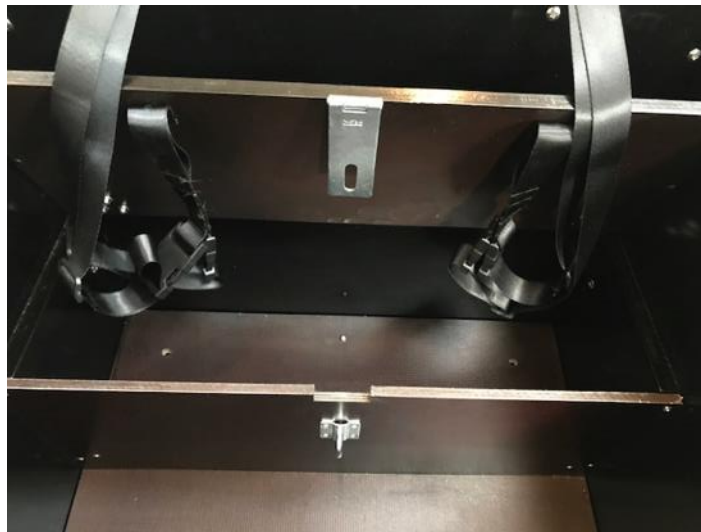


Amcargobikes

Cargo bike enthusiast since 1992

Bench with storage box



ASSEMBLY-MANUAL

Amcargobikes

Cargo bike enthusiast since 1992

STEP 1: Assembly of the vertical plate

- The vertical plate is placed in the box in front of the edge strips for the children's bench (see picture 1A and 1B). The two small screws normally used for mounting the fixed children's bench are carefully screwed through the vertical plate and into the end of the edge strip (see picture 1C, 1D, 1E and 1F). If necessary, pre-drill with a 2 mm drill bit.



Picture 1A



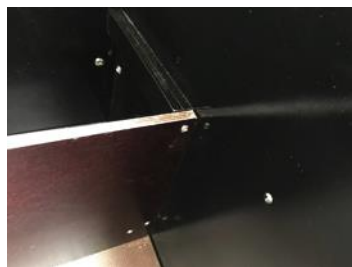
Picture 1B



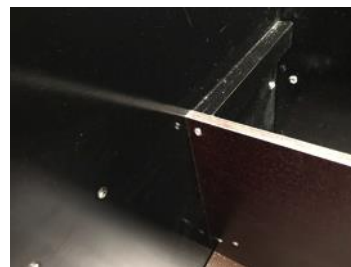
Picture 1C



Picture 1D



Picture 1E



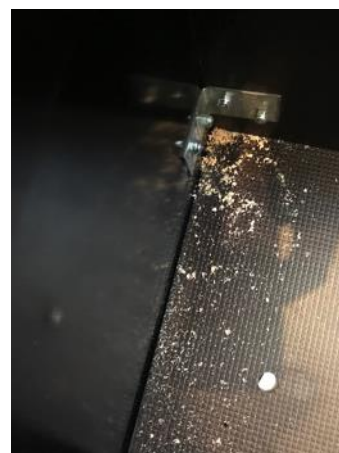
Picture 1F



- Holes are drilled through the side plates of the box with a 5 mm drill for mounting the angle brackets (see picture 1G).
- The bolts are inserted from the outside in and the nuts on the inside - and these are tightened (see picture 1H).



Picture 1G



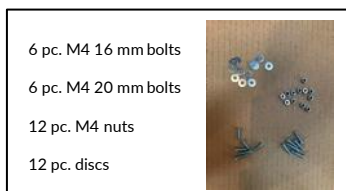
Picture 1H

Amcargobikes

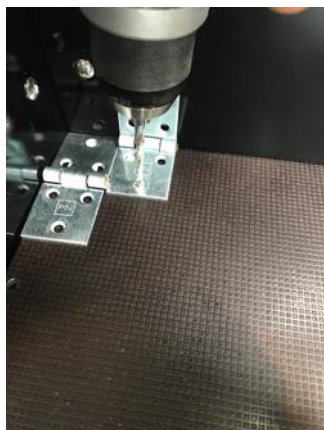
Cargo bike enthusiast since 1992

STEP 2: Assembly of the hinges

- The children's bench is placed in the bicycle as shown in picture 2A.
- Holes are drilled for mounting the hinges in the children's bench and in the back plate a "hinge width" inside the plates - as shown in picture 2B.
- One side of the hinges is mounted in the children's bench with the 20 mm bolts, washers and nuts - as shown in picture 2C and 2D



Picture 2A



Picture 2B



Picture 2C



Picture 2D

- The other side of the hinges is mounted in the back plate with the 16 mm bolts, washers and nuts as illustrated in picture 2F and 2G.



Picture 2E



Picture 2F



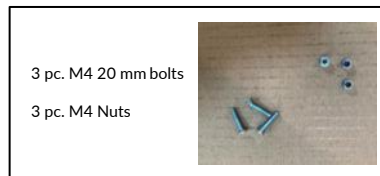
Picture 2G

Amcargobikes

Cargo bike enthusiast since 1992

STEP 3: Assembly of the padlock hinge

- One part of the padlock hinge is placed in the middle of the cutout and the holes are marked and drilled with a 5 mm drill bit - see picture 3A and 3B.
- One part of the padlock hinge is mounted with the three 20 mm bolts and nuts on the back as shown in pictures 3C and 3D.



Picture 3A



Picture 3B



Picture 3C

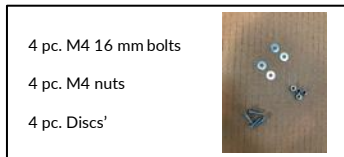


Picture 3D

Amcargobikes

Cargo bike enthusiast since 1992

- The second part of the padlock hinge is placed on the vertical plate, so that the padlock hinge eventually tightens so that it does not rattle when driving. Holes are drilled with a 5 mm drill and the four 16 mm bolts, washers and nuts are fitted - see picture 3E and 3F.



Picture 3E



Picture 3F