

KIDS CARGO BIKE



ASSEMBLE MANUAL

Read and understand these instructions before you begin the assembly. The bike comes partly assembled, and it is important to read the manual carefully before starting assembly, so the bicycle will be assembled in the correct order.

Be aware that the bike must be re-tightened after approx. 20 km. Make sure to check all parts of the bike and re-tighten all moving parts, including breaks, spokes, bolts and nuts.

Step 1: Mounting of the cargo bike box

- When the parts have been taken out of the boxes and wrapping, the four corner brackets are mounted as shown in picture 1A and 1B. Notice that the brackets with the bushings for the steer must face the back end of the bike.



- 4 pc. corner brackets
- 16 pc. short bolts
- 16 stk. washers
- 16 stk. round nuts



Picture 1A



Picture 1B

- The front reflector is mounted – see picture 1C.



Picture 1C

- The two bolts for mounting of the handle bar is placed in the corner brackets – see picture 1D and 1E.



Picture 1E



Picture 1D

- The angle brackets are mounted on the side plates as shown in picture 1F and 1G.



- 4 pc. angle brackets
- 4 pc. short bolts
- 4 pc. washers
- 4 pc. lock nuts



Picture 1F



Picture 1G

Step 2: Mounting of front fenders and front wheels

- The front fenders are mounted – ses picture 2A and 2B.



- 2 pc. front fenders
- 8 pc. small bolts
- 8 pc. small washers



Picture 2A



Picture 2B

- The front wheels are mounted – see picture 2C.



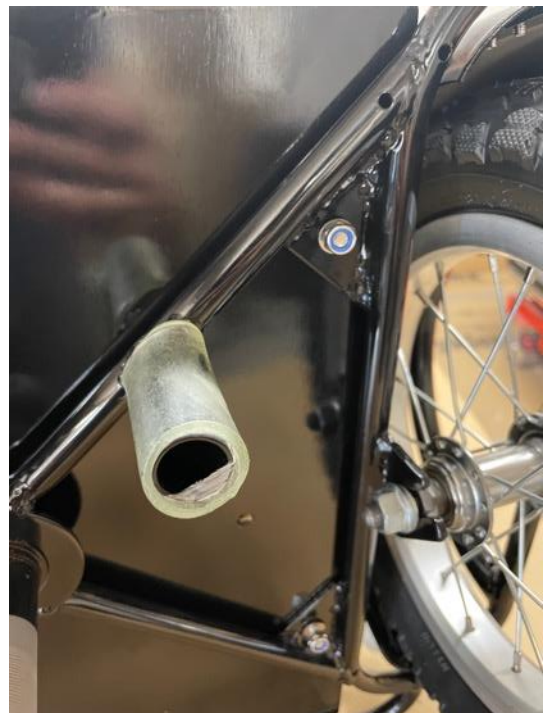
Picture 2C

Step 3: Mounting of the box on the frame and mounting of the handle bar

- The box and the bottom plate are mounted on the frame – see picture 3A and 3B. The four long bolts should sit through the angle brackets, through the bottom plate and through the holes in the frame.



- 4 pc. long bolts
- 4 pc. washers
- 4 pc. lock nuts



Picture 3B



Picture 3A

- The handle bar is mounted – see picture 3C.



Picture 3C

Step 4: Assembly of the frame and the back frame - and the rest

- The cargo box frame and back frame are assembled using the bearings and bit nuts - see picture 4A and 4B.



Picture 4A



Picture 4B

- The pedals and the saddle is mounted – see picture 4C, 4D and 4E.



Picture 4C



Picture 4D



Picture 4E

ENJOY YOUR NEW CARGO BIKE!

