

Amcargobikes

Cargo bike enthusiast since 1992

ELECTRIC CARGO BIKE



ASSEMBLE INSTRUCTIONS

Read and understand these instructions before you begin the assembly. The bike comes partly assembled, and it is important to read the manual carefully before starting assembly, so the bicycle will be assembled in the correct order. It is recommended to be two people to assemble the cargo bike. Be aware that the bike must be re-tightened after some weeks of use. Make sure to check all parts of the bike and re-tighten all screws and bolts.

Amcargobikes

Cargo bike enthusiast since 1992

Step 1: Assembly of the back and front frame

- When the parts have been taken out of the boxes and wrapping, place the front frame upside down on two chairs.
- Place the back frame upside down "on top" of the front frame. Avoid taking the plastic on the luggage carrier off to avoid scratches in the paint.
- The main bolt is mounted from below as shown in picture 1A, 1B, and 1C by using a hammer or something similar. It should fit tightly. The bearings and main bolt should be lubricated with grease. Do not tighten the nut yet.



Picture 1A



Picture 1B



Picture 1C

- With the 7 large bolts, washers and nuts mount the bow-shaped and the two straight metal rods as shown on image 1D, 1E, 1F, and 1G. The metal rods must be placed below the trapezoidal plate and above on the frame as shown in picture 1F and 1G. In order to avoid that the stainless steel locknuts get stuck halfway down on the bolt, use some grease at the end of the bolts, before the nut is tightened. Only when these are tightened, tighten the large nut on the main bolt as hard as possible, and insert the split.



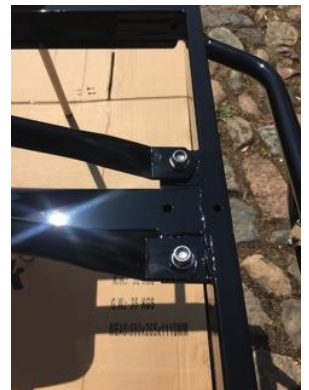
Picture 1D



Picture 1E



Picture 1F



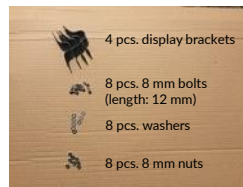
Picture 1G

Amcargobikes

Cargo bike enthusiast since 1992

Step 2: Fenders, front wheels and brake pads

- One of the chairs is moved to the end of the front frame and the second chair is removed.
- The front fenders are mounted with 8 small bolts, washers, and nuts + the four brackets (see picture 2A and 2B). To make sure that the fenders are just above the wheels, the nuts are tightened after the wheels are mounted.
- Mount the front wheels as shown in the picture 2C and 2D.
- Loosen the four brake pads on the front wheels and adjust them so they are properly placed vis-a-vis the rim (picture 2E).
- Finally, the chair is removed and the bike is turned around (see picture 2F).



Picture 2A



Picture 2B



Picture 2C



Picture 2D



Picture 2E



Picture 2F

Amcargobikes

Cargo bike enthusiast since 1992

Step 3: Assemble the box

- The corner brackets for the box are mounted as shown in picture 3A.
- The correct position of the four different corner fittings is shown on picture 3B, 3C, 3D, and 3E.



Picture 3A



Picture 3B



Picture 3C

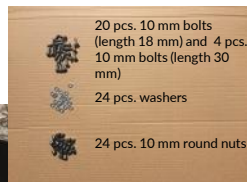


Picture 3D



Picture 3E

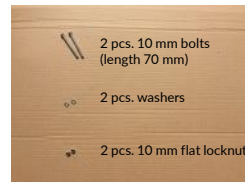
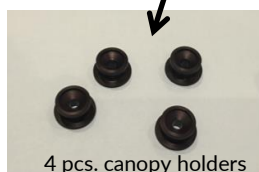
- The front and back panels are mounted (see picture 3F).
- The side panels are mounted (see picture 3G). The four canopy holders are mounted with the long bolts in the holes in the middle (see pictures below)
- The base panel is mounted (see picture 3H)



Picture 3F



Picture 3G



Picture 3H



Amcargobikes

Cargo bike enthusiast since 1992

Step 4: The rest of the equipment

- The two step-boards are mounted (see picture 4A and 4B)

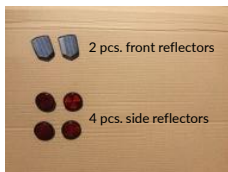


Picture 4A

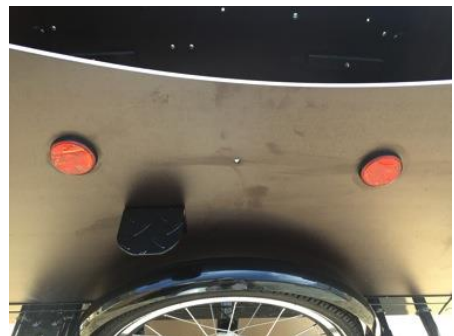


Picture 4B

- The front and side-reflectors are mounted (see picture 4C and 4D)

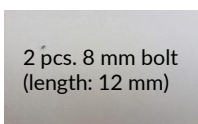


Picture 4C



Picture 4D

- The headlights are mounted on both sides of the box (see picture 4E and 4F)



Picture 4E

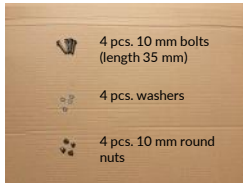


Picture 4F

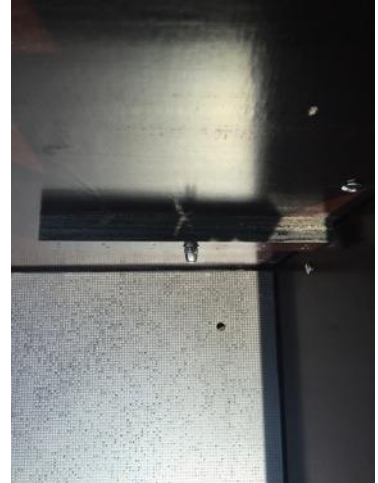
Amcargobikes

Cargo bike enthusiast since 1992

- The four mouldings, which keep the child seats in place are secured with the four long bolts. (see picture 4H and 4I).



Picture 4H



Picture 4I

- The child seats are mounted with four screws.
- The seat belts are mounted on the outside of the box (front- and back panel) and below the child seat (see picture 4J, 4K, 4L and 4M)



Picture 4J



Picture 4K



Picture 4L



Picture 4M

Amcargobikes

Cargo bike enthusiast since 1992

The pedals are mounted (see picture 4N and 4O)



Picture 4N



Picture 4O

- The saddle is mounted on the saddle post and this is mounted on the bike (see picture 4P).
- The protective caps are mounted on the wheel nuts (see picture 4Q).
- The handlebar is mounted and the break handles, gear shifter, display and bell are mounted on the handlebar (see picture 4R).



Picture 4P



Picture 4Q



Picture 4R

Amcargobikes

Cargo bike enthusiast since 1992

Step 5: Brake cables and adjustment of breaks and gear

- The brake cables are pulled through the handlebar to the left (see picture 5A).
- The brake cables for the front breaks are mounted in the left break handle as shown on picture 5A and 5B.



Picture 5A



Picture 5B

- The brake cables are secured via the cable holders (see picture 5C).
- The brake cables are mounted on the two front breaks (see picture 5D and 5E):
 - The umbraco screw on the right hand side brake lever is loosened
 - Ensure that the break pad sits straight vis-à-vis the rim
 - The screws on the side of the break levers are adjusted so that the two break levers have equal suspension / are equally hard to push in towards the rim
 - The brake cables are pulled through the quarter-circular shaped cable holders and are mounted in the break lever. The rubber suspension is attached.
 - Ensure that there is a couple of mm movement flexibility and then tighten the umbraco screw. Ensure that the break pads do not touch the rim on both sides when the wheel is turned



Picture 5C



Picture 5D



Picture 5E

Amcargobikes

Cargo bike enthusiast since 1992

- Follow the same procedure for the back break (see picture 5F).



Picture 5F

- The gear is tested. If the gear “clicks” or it feels difficult to change gear for some of the six levels, please use the plastic hand-screw located where the gear cable meet the gear to adjust it.

IMPORTANT!

- The frame number is stamped into the frame on the left side of the bike – just in front of the left pedal.
- Remember to adjust and re-tighten all moving parts on the bike after some weeks of use. If re-tightening of the spokes are needed, please use a spoke tightener.

ENJOY YOUR NEW CARGO BIKE!