

AMCARGOBIKES

Cargo bike enthusiasts, since 1992

ELECTRICAL CARGO BIKE

with Hydraulic disc breaks - DELUXE



ASSEMBLE MANUAL

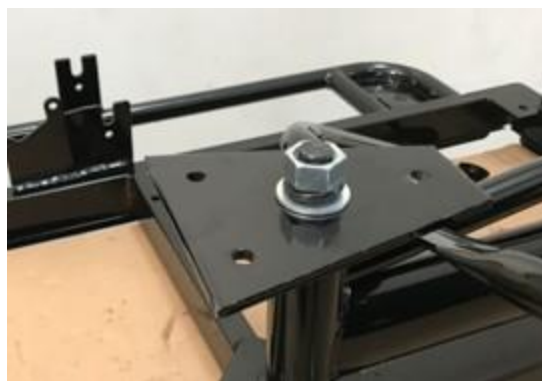
Read and understand these instructions before you begin the assembly. The bike comes partly assembled, and it is important to read the manual carefully before starting assembly, so the bicycle will be assembled in the correct order. It is recommended to be two people to assemble the cargo bike. Be aware that the bike must be re-tightened after approx. 20 km. Make sure to check all parts of the bike and re-tighten all moving parts, including breaks, spokes, bolts and nuts.

Step 1: Assembly of the back and front frame

- When the parts have been taken out of the boxes and wrapping, place the front frame upside down on two chairs (see picture 1A).
- Place the back frame upside down "on top" of the front frame. Avoid taking the plastic on the luggage carrier off to avoid scratches in the paint.
- The main bolt is mounted from below as shown in picture 1B by using a hammer or something similar. It should fit tightly. The bearings should be lubricated with grease. Do not tighten the nut yet.



Picture 1A



Billede 1B

- With the 7 large bolts, washers and nuts mount the bow-shaped and the two straight metal rods as shown on image 1C, 1D and 1E. The metal rods must be placed below the trapezoidal plate and on top of the frame as shown in the pictures. In order to avoid that the stainless steel locknuts get stuck halfway down on the bolt, use some grease at the end of the bolts, before the nut is tightened. Only when these are tightened, tighten the large nut on the main bolt as hard as possible, and insert the split.



- 7 pc. 13 mm bolts (length: 25 mm)
- 7 pc. washers
- 7 pc. 13 mm nuts



Picture 1C



Picture 1D



Picture 1E



Picture 1F

Step 2: Fenders, front wheels and brake pads

- One of the chairs is moved to the end of the front frame and the second chair is removed.
- The front fenders are mounted with 8 small bolts, washers, and nuts + the four brackets (see picture 2A and 2B). To make sure that the fenders are just above the wheels, the nuts are tightened after the wheels are mounted.



- 8 pc. 8 mm bolts (length: 12 mm)
- 8 pc. washers
- 8 pc. 8 mm nuts



Picture 2A



Picture 2B

- The brake cable / brake calipers are mounted. First install the distributor with the two glossy umbraco bolts. Note that this must be the opposite of what you expect (see picture 2C).
- Then mount the two brake calipers with the four black umbraco bolts. Note: use 2-3 extra washers per Allen bolt to ensure good distance from the end of the screw to the brake disc. See Figures 2D and 2E.



- 2 glossy umbraco bolts with washers
- 4 black umbraco bolts with 2-3 extra slices



Picture 2C



Picture 2E



Picture 2D

- The break discs are mounted on the front wheels with the 2 x 6 small black torx bolts – see picture 2F.
- Mount the front wheels as in picture 2G.
- The position of the break calipers versus the break discs are adjusted via the blank umbraco-disc on the outside of the kaliber and the side-by-side adjustment bolts on the break caliber – see picture 2H and 2I. The break discs should in this way run freely without touching the break pads when the wheel is turned. It is however OK if there is a small "whisling" sound from the break when the wheel is turned – this will disappear after a few days of use.
- Then the bike is turned (see picture 2J).



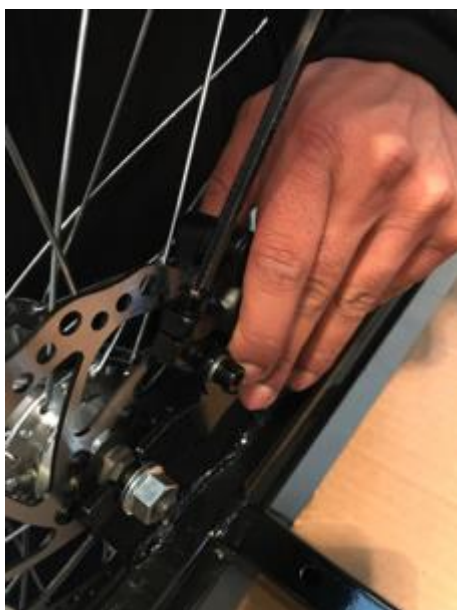
- 2 pc. break discs
- 2 x 6 small black torx bolts



Picture 2F



Picture 2G



Picture 2H



Picture 2I



Picture 2J

Step 3: Assemble the box

- The corner brackets for the box are mounted as shown in picture 3A – with the nuts on the inside.
- The correct position of the four different corner fittings is shown on picture 3B.



- 8 pc. 10 mm bolts (length 30 mm)
- 8 pc. washers
- 8 pc. 10 mm lock nuts



Picture 3A



Picture 3B

The following is mounted loosely and tightened in the end:

- The front and back panels are mounted (see picture 3C) with 12 of the 10 mm bolts, washers and rounded nuts as illustrated below – with the nuts on the outside.
- The side panels are mounted (see picture 3D) with the remaining 8 of the 10 mm bolts, washers and rounded nuts. The four canopy holders are mounted with the long bolts in the holes in the middle (see picture 3E below). All nuts on the outside.
- The base panel is mounted (see picture 3F) – with the nuts on the underside.
- And then all bolts and nuts are tightened.



- 20 pc. 10 mm bolts (length 18 mm)
- 20 pc. washers
- 20 pc. 10 mm rounded nuts



- 4 pc. 10 mm bolt (length 30 mm)
- 4 plastic elements for canopy-mounting
- 4 pc. washers
- 4 pc. 10 mm rounded nuts



Picture 3C



Picture 3D



Picture 3E



- 2 pc. 10 mm bolts (length 70 mm)
- 2 pc. washers
- 2 pc. 10 mm lock nuts



Picture 3F

- The two step boards and reflectors are mounted (see picture 3G, 3H and 3I).



- 2 pc. step boards
- 4 pc. 10 mm bolts (length 18 mm)
- 4 pc. washers
- 4 pc. 10 mm rounded nuts



- 4 pc. yellow side-reflectors
- 2 pc. white front-reflectors



Picture 3G



Picture 3H



Picture 3I

Step 4: The rest of the equipment

- The headlights are mounted on the sides of the box (see picture 4A) with the two last 8 mm bolts (same type as for the front fenders).



Picture 4A

- The pedals are mounted (see picture 4B) – note that they have left-thread and that the pedals have left / right markings.



Picture 4B

- The child seats are mounted with four screws (see picture 4C). The seat belts are mounted on the outside of the box (front- and back panel) and below the child seats (see picture 4C and 4D).



Picture 4C



Picture 4D

- 8 pc. 10 mm bolts (length 18 mm)
- 8 pc. washers
- 8 pc. 10 mm lock nuts

- The plastic fittings for the steer and the canopy-holders are mounted with a small hammer (see picture 4E and 4F).
- The plastic-fittings for the wheel nuts are mounted with a small hammer (ses picture 4G).



Picture 4E



Picture 4F



Picture 4G

- The saddle is mounted on the saddle post and this is mounted on the bike (see picture 4H)



Picture 4H

- The handlebar is mounted and the break handles, gear shifter, display and bell are mounted on the handlebar (see picture 4I, 4J, 4K, 4L).



Picture 4I



Picture 4J



Picture 4K



Picture 4L

Step 5: Brake cables and adjustment of breaks and gear

- The back-break is mounted (see picture 5A and 5B):
 - The umbraco bolt on the break arm is loosened
 - Make sure that the break pads are in the right position versus the rim on both sides
 - The screws on each side of the break arms are adjusted so that the two arms are equally tight when pushed against the rim
 - Give a couple of mm space to the rim on each side before the umbraco bolt is tightened.



Picture 5A



Picture 5B

- Attach the brake cable with the two cable holders and the small glossy bolt (see Figures 5C, 5D and 5E).



Picture 5C

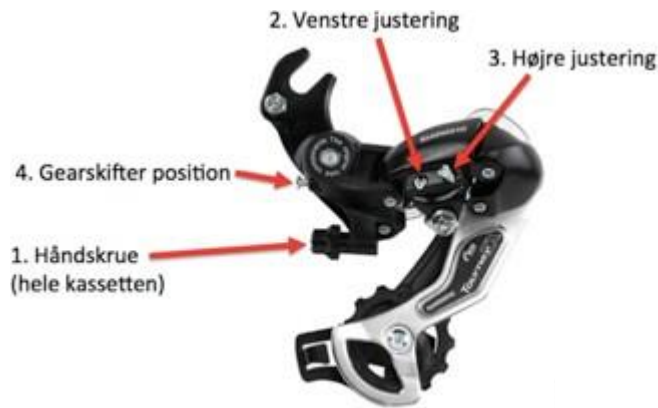


Picture 5D



Picture 5E

- The gear is tested. If the gear "clicks" or you experience difficulties in changing gear, you can adjust the gear by using the small black "hand-screw" where the gear cable is mounted on the gear shift (see picture 5F).



Billede 5F

IMPORTANT:

- The frame number is stamped into the frame on the left side of the bike – just in front of the left pedal.
- Remember to adjust and re-tighten all moving parts on the bike after some weeks of use. If re-tightening of the spokes are needed, please use a spoke tightener.
- See our "Let us help" guides on www.amladcykler.dk.



ENJOY YOUR NEW CARGO BIKE...!